

Case Study Wedgewood Way, Stevenage



Metropolitan Housing Trust and Chase New Homes, in partnership with Stevenage Borough Council, are working together to create a development of 248 new homes at Wedgewood Way in Stevenage.

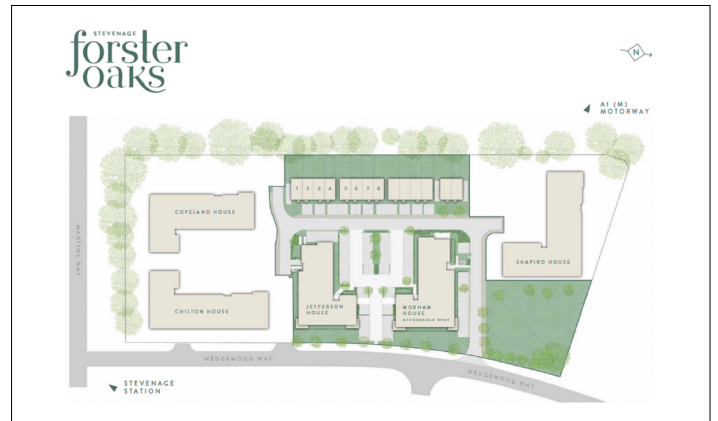
The development is being built on the former DuPont factory site and will bring 248 much needed new affordable homes to the Stevenage area when the project is completed later in 2019.

Chase New Homes appointed engineered timber specialists David Smith St Ives to manage the design and supply of large scale JJI-Joists and JJ-Beam, which were used to create five blocks of flat roofs for the building.

David Smith St Ives worked in conjunction with the Forres-based design team at James Jones & Sons to create the roof structures, which had spans of up to 8 metres.

David Smith St Ives began working on the project designs late in 2017, with delivery of JJI-Joists and JJ-Beam beginning in April 2018.

In total 13,818 lineal metres of 350D JJI-Joists and 1,412 lineal metres of 45mm x 350x JJ-Beam have been used in the building.



Block B



Aerial shot

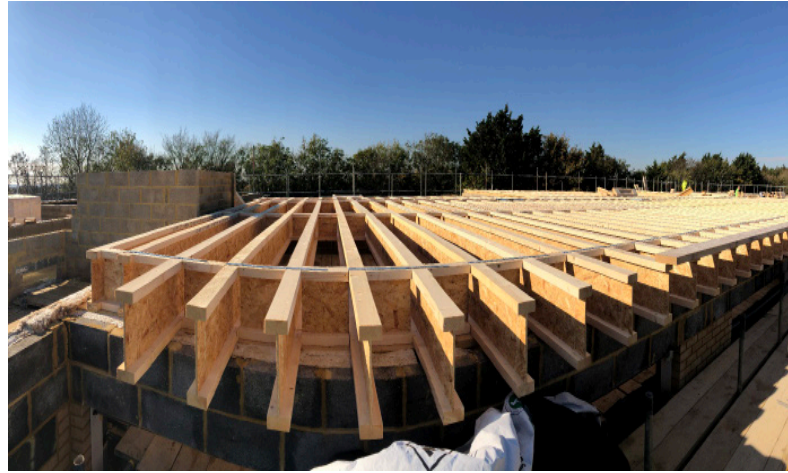
67,750-kg CO₂ is the amount of CO₂ saved using JJI-Joists. Find out more at: www.jamesjones.co.uk/pas-2050

CLIENT	METROPOLITAN HOUSING TRUST
ARCHITECT	CHASE NEW HOMES
CONTRACTOR	CHASE NEW HOMES
JJI-JOISTS/JJ Beam	350D 300 JJ BEAM
ENGINEER	CHASE NEW HOMES
ENGINEERED TIMBER SUPPLIER	DAVID SMITH ST IVES

Case Study Wedgewood Way, Stevenage



JJI-Joists are the UK's market-leading I-Joist and the brand most specified by architects. JJI-Joists are the only UK manufactured I-Joist with FSC Certification and a carbon negative impact figure to PAS:2050 standards



JJI-Joists are capable of large spans. They are light-weight, long and strong. Suitable for floors, walls and roof projects

The JJI-Joist system relies on a unique combination of engineered products designed to complement each other and deliver outstanding performance

