

Disability Learning Centre-Rochford JJI-Joist Case Study



David Smith St Ives Limited were called upon to design and manufacture a demanding, multi pitched Green Roof System for a Disability Learning Centre in the heart of Rochford, Essex.

Their customer was Duncan Cameron & Hutchinson Limited, the main contractor for the client EDPA (Essex Disabled People's Association).

The roof consisted of 6 sections all with varying pitches and directions and was created using 450mm deep JJI-Joists supported on large Glulam Feature Beams.

The brief for the project stated that the building must blend in with its surrounds as well as possible which meant allowing additional loads for a 'Green Roof' covering which is basically a low maintenance roof lawn.



Construction of east wing



JJI-Joist roof being fixed to glulam structure

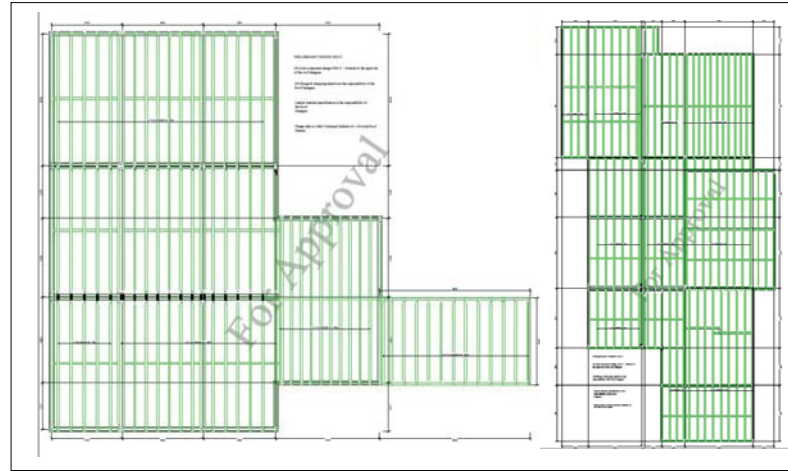
-4582 kg CO₂
is the amount of CO₂ saved
using JJI-Joists. Find out more
at:
jamesjones.co.uk/pas-2050

CLIENT	DUNCAN CAMERON & HUTCHINSON
ENGINEERED WOOD SUPPLIER	DAVID SMITH ST IVES
PROJECT VALUE	£21K
JJI-JOISTS	450D 880LM
CONTRACTOR	ESSEX DISABLED PEOPLE'S ASSOCIATION
METALWORK SUPPLIER	ITW CULLEN BUILDING PRODUCTS

Disability Learning Centre-Rochford JJI-Joist Case Study



JJI-Joists are the UK's market-leading I-Joist and the brand most specified by architects. JJI-Joists are the only UK manufactured I-Joist with FSC Certification and a carbon negative impact figure to PAS:2050 standards



JJI-Joists are capable of large spans up to 12m. They are light-weight, long and very very strong. Suitable for floors, walls and roof projects.

The JJI-Joist system relies on a unique combination of engineered products designed to complement each other and deliver outstanding performance

