

# Case Study The Glasgow House



£100 house incorporating James Jones & Sons Ltd IntelliRoof System™- Four energy efficient prototype houses.

Construction of energy efficient, sustainable houses to combat fuel poverty in Glasgow.

Fully engineered panelised solution for fast on-site erection of a fully decked, insulated, watertight, braced room-in-the-roof.

Insulation with 300mm Flexi insulation, the panels deliver U-Values of 0.13W/m<sup>2</sup>K.

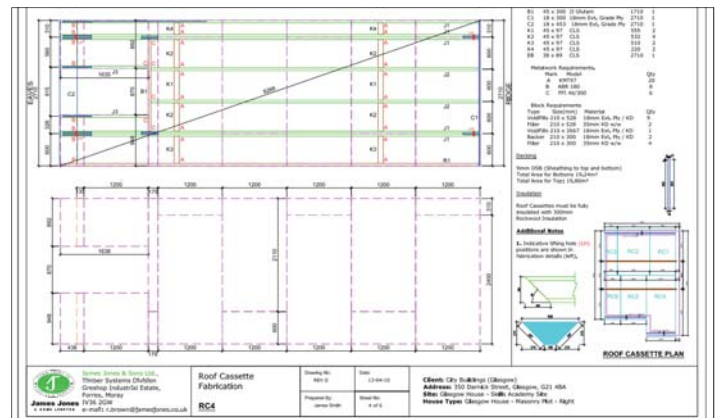
Off-site prefabricated roof and floor panels to speed up on-site construction and increase operating safety.

Simple building forms for ease of construction and to minimise heat loss and use of energy.

Pilot project to be monitored for energy efficient performance, houses are expected to meet the Ecohomes 'Excellent' rating.



Roof cassette being lowered into place



Roof cassette layout

**-5200 kg CO<sub>2</sub>** is the amount of CO<sub>2</sub> saved using JJI-Joists. Find out more at: [jamesjones.co.uk/pas-2050](http://jamesjones.co.uk/pas-2050)

CLIENT	GLASGOW HOUSING ASSOCIATION
ARCHITECT	PRP ARCHITECTS
CONTRACTOR	CITY BUILDINGS GLASGOW LLP
JJI-JOISTS	1750LM 300A+
CASSETTE MANUFACTURER	ROWAN TIMBER
TIMBER FRAME MANUFACTURER	ROYAL STRATHCLYDE BLINDCRAFT INDUSTRIES
ENGINEERED WOOD SUPPLIER	ROWAN TIMBER

# Case Study The Glasgow House



JJI-Joists are the UK's market-leading I-Joist and the brand most specified by architects. JJI-Joists are the only UK manufactured I-Joist with FSC Certification and a carbon negative impact figure to PAS:2050 standards



JJI-Joists are capable of large spans. They are light-weight, long and strong. Suitable for floors, walls and roof projects

The JJI-Joist system relies on a unique combination of engineered products designed to complement each other and deliver outstanding performance

